

Middlesex Community College

Student Assessment

Bedford Coordinator: Kathrina Gaffron

Lowell Coordinator: Brittney Moore-Miller



English Placement



All students must submit a high school transcript

- Students will be placed into English classes based on high school GPA if they graduated from a US high school within the last ten years.
- Students that graduated over 10 years ago or graduated outside of the United States should use Guided Self-Placement.

English 101 Course Placement

US High School GPA
2.7 or higher (10 years)

ACT Score
English Language Arts Score of
22 or higher (10 years)

GED Score
RLA Score of 165 or higher
(10 years)

SAT Score
Evidence-Based Reading &
Writing Score of 500 or higher
(10 years)

HiSet Score
Language Arts Score of 15 or
higher (10 years)

Transfer Credits
College level English
Composition class



English 109 with English 101 Course Placement

US High School GPA
2.0-2.699 or higher (10 years)

English 092 Course Placement

US High School GPA
1.999 or lower (10 years)

Where to send your transcripts and score reports?

High School and College Transcripts

transcripts@middlesex.edu

SAT, ACT, HiSet, GED Score Reports

placement@middlesex.edu



English Guided Self-Placement

Section 1
English Language Learners

Note: Skip if English
is your first language

Section 2
Reading

Section 3
Writing

Section 4
Placement

Download the English Guided Self Placement Packet at <https://www.middlesex.mass.edu/studentassessment/downloads/engguide.docx>

Section 1: English Language Learners

If English is your second language answer the questions in this section

If you are comfortable speaking in English, you can proceed to Section 2

If you are uncomfortable speaking in English, you can request a “Double Check” appointment with an ELL specialist to help you choose the right class

All students that wish to have additional help with English Guided Self-Placement can request a “Double Check” Appointment. To sign up fill out the form at <https://etcentral.sd.middlesex.mass.edu/#/form/117>

Section 2: Reading

1. Read the Short Passage Provided in the Packet
2. Review the sample questions
3. Rate yourself on your readiness after reviewing the tasks

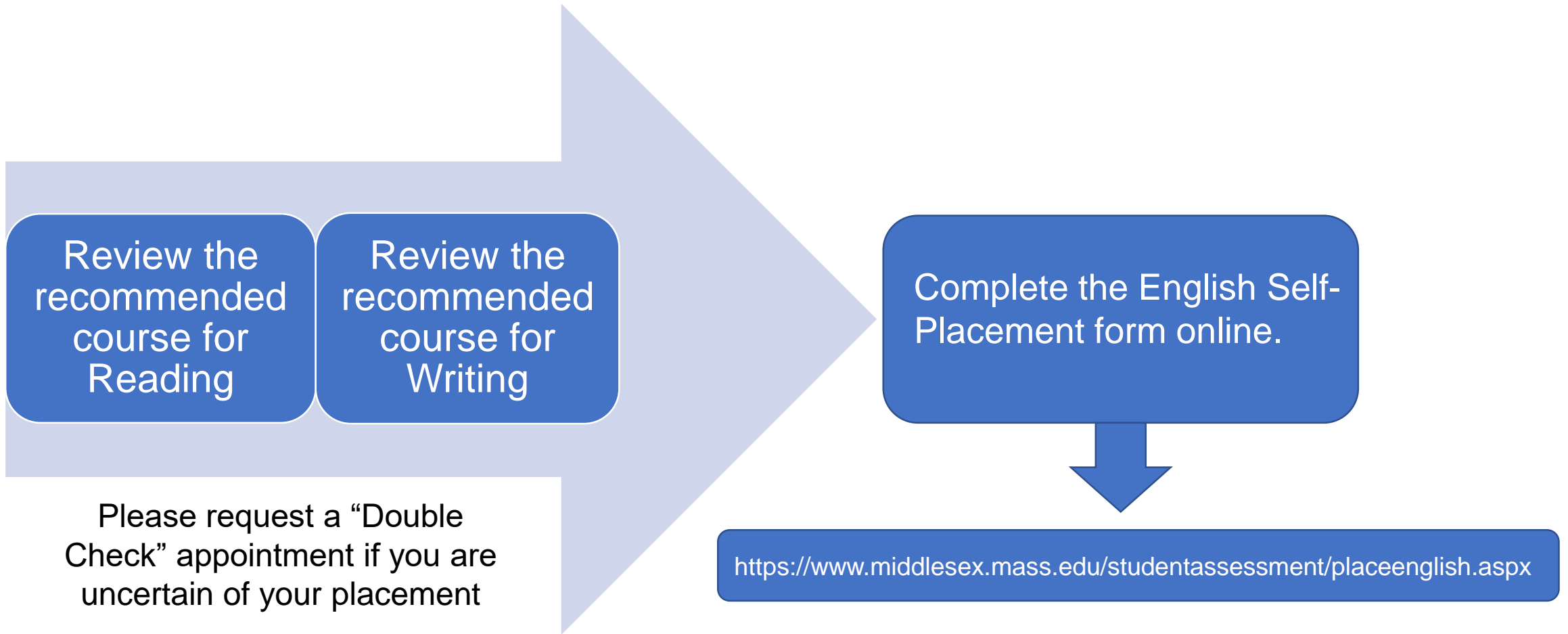
Rating	Course Recommendation
“I can easily do this”	ENG 101 or ENG 101 Honors
“I can do this with time or help”	ENG 109 with ENG 101
“This would be difficult to do”	ENG 092

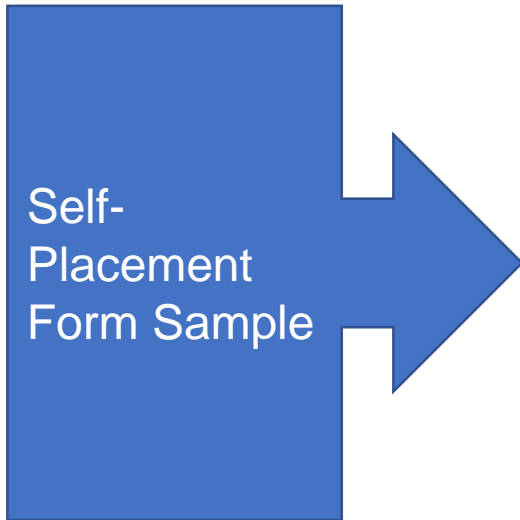
Section 3: Writing

1. Read the Short Passage Provided in the Packet
2. Read the Sample Writing Prompt
3. Rate yourself on your readiness after reviewing the tasks

Rating	Course Recommendation
“I can easily do this”	ENG 101 or ENG 101 Honors
“I can do this with time or help”	ENG 109 with ENG 101
“This would be difficult to do”	ENG 092

Section 4: Placement





English Self-Placement Form

First Name

Last Name

Student ID

Phone

Preferred Email

Birth Date 

Have you submitted an Admissions application?
 Yes No

- Please check off your course placement
- ELL 054 ELL Reading and Writing 1
 - ELL 055 ELL Reading and Writing 2
 - ENG 092 Reading, Writing, Reasoning
 - ENG 109 with ENG 101 Critical Thinking/English Composition I
 - ENG 101 English Composition 1
 - ENG 101 Honors English Composition 1/Honors

Please provide the reasons you believe this is the best course placement for you. In your description also include which course best describes your previous experience.

<https://www.middlesex.mass.edu/studentassessment/placeenglish.aspx>

Math Placement



College Level Math Course Placement

High School GPA,
2.7 or higher

- **MAT 120 – MAT 195**
- **MAT 196:** 2.7 GPA + Algebra II with B or better (3yrs)
- **MAT 290:** 2.7 GPA + Trigonometry and Precalculus with B or better (3yrs)

SAT/ACT Scores

- **MAT 290:** SAT Math score of 600 or higher (3yrs)
- **MAT 120 – MAT 195:** SAT Math score of 550 or higher (3yrs)
- **MAT 120 – MAT 195:** ACT Math score of 22 or higher (3yrs)

College Courses

- We transfer in college level math courses with a C- or higher with official transcripts from regionally accredited colleges and universities.
- If a different math is required for your major, you may still need to take a math course at MCC.

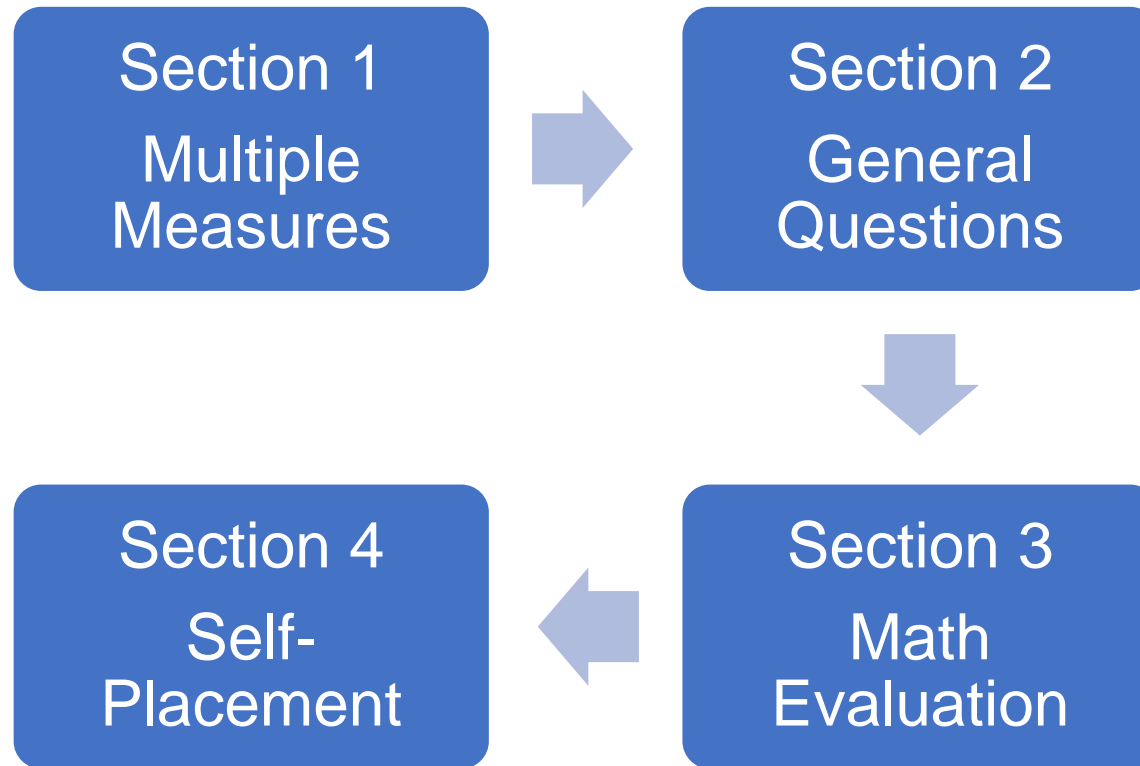
Where to send your transcripts and score reports?

SAT/ACT Score Reports
placement@middlesex.edu

High School and College Transcripts
transcripts@middlesex.edu



Math Guided Self-Placement



Download the Math Guided Self Placement Packet at <https://www.middlesex.mass.edu/studentassessment/downloads/mselfplacew.docx>

Section 2: General Questions

What is the highest level of Math that you took?

Are you comfortable learning new Math concepts?

What was your experience in previous Math courses?

What is your major?

Section 3: Math Evaluation

Sample Course	Description	Problems
MAT120 Math for Liberal Arts	<p>Topics will be drawn from areas such as: collecting, describing and analyzing data; probability and decision-making; loans and investments; population growth; linear programming; and geometry of measurement.</p> <p>Course uses group work/projects and focuses on real-life applications of concepts.</p>	<ol style="list-style-type: none"> 1. Change the following into a percentage. $\frac{3}{14}$ 2. Change the percentage to a fraction in lowest terms 74% 3. Change the percentage to a decimal 52% 4. Determine the value of the expression when $x=7$ $3\sqrt{(10-x)^2}$ 5. Solve for x $2(x-7) = 5(x+3) - x$ 6. Solve $4 - (3 + 7) + 15 \div 5 - 2$ 7. $\frac{7.8}{13} = \frac{n}{2.6}$ solve for n

Next Step

If you solved all the problems correctly and you feel comfortable with Math

- take the listed Math course

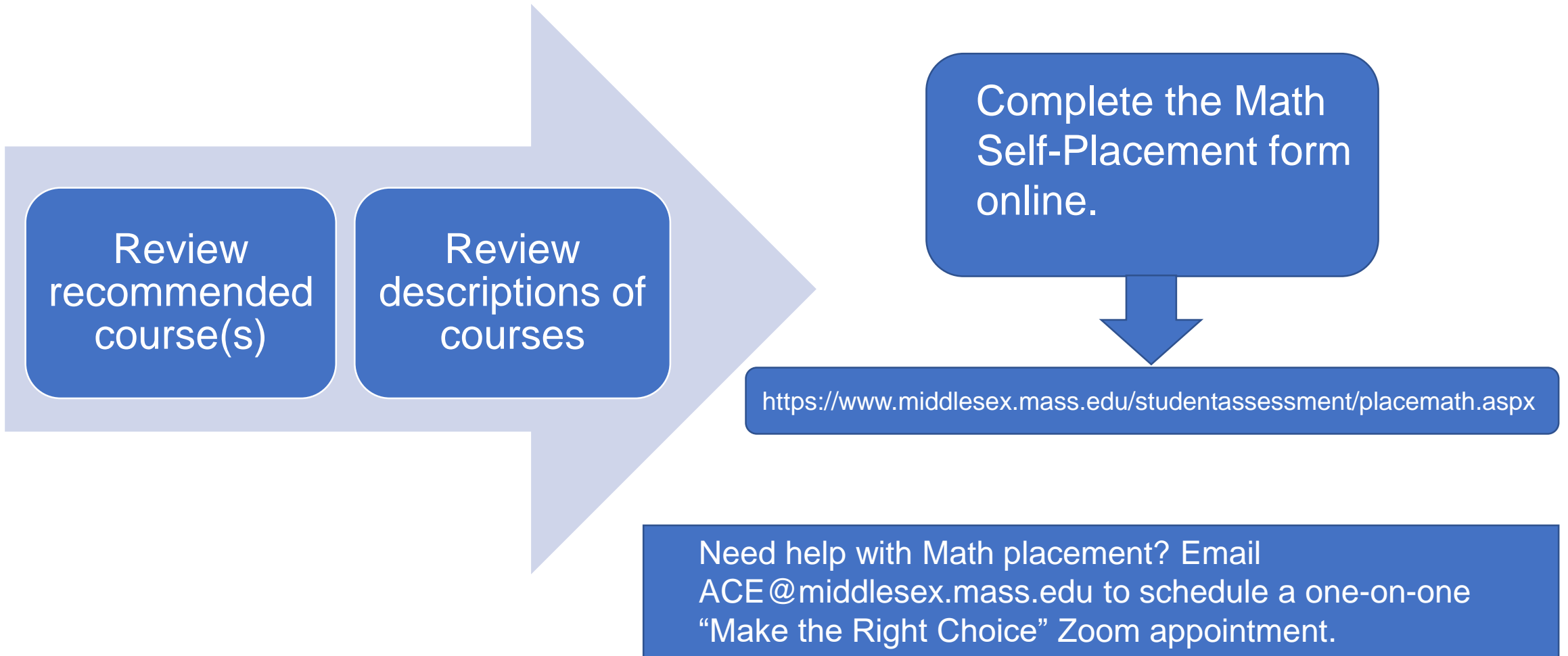
If you solved most of the problems correctly but would benefit from some support

- take MAT 007 with MAT 120 or MAT 177
- take MAT 008 with MAT 195

If you did not solve all the problems correctly, or you do not feel comfortable with Math

- take MAT 001
- review the problems for Modules 70/80 or Module 5

Section 5: Placement



Math Self-Placement Form

First Name

Last Name

Student ID

Phone

Preferred Email

Birth Date

Have you submitted an Admissions application?

- Yes No

Self-Placement
Form Sample

Please check off your course placement

- MAT 001 Preparation for College Math (Begin at Module 1)
- MAT 001 Preparation for College Math (Begin at Module 5)
- MAT 001 Preparation for College Math (Begin at Module 70/80)
- MAT 007 with MAT 120 Skills Development/Math for Liberal Arts
- MAT 007 with MAT 177 Skills Development/Statistics
- MAT 008 with MAT 195 Skill Development/Precalculus for Engineering and Science
- MAT 120 Math for Liberal Arts
- MAT 130/131 Elements of Math 1/Elements of Math 2
- MAT 165 Trigonometry for Engineering and Science
- MAT 177 Statistics
- MAT 182 Precalculus for Business and Social Science
- MAT 195 Precalculus for Engineering and Science

Please provide the reasons you believe this is the best course placement for you.

Visit our website at www.middlesex.mass.edu/studentassessment

Email us at placement@middlesex.edu

Bedford Campus

Enrollment Center Building- Rm 114
591 Springs Road
Bedford, MA 01730

Kathrina Gaffron

*Office in EC-115
gaffronk@middlesex.edu
(781) 280-3735*

Roger Scales

*Office in EC-114
scalesr@middlesex.edu
(781) 280-3723*

Lowell Campus

Cowan Center Building – Rm 205
33 Kearney Square
Lowell, MA 01852

Brittney Moore-Miller

*mooreb@middlesex.edu
(978) 656-3016*

Kathleen Downing

*downingk@middlesex.edu
(978) 656-3337*